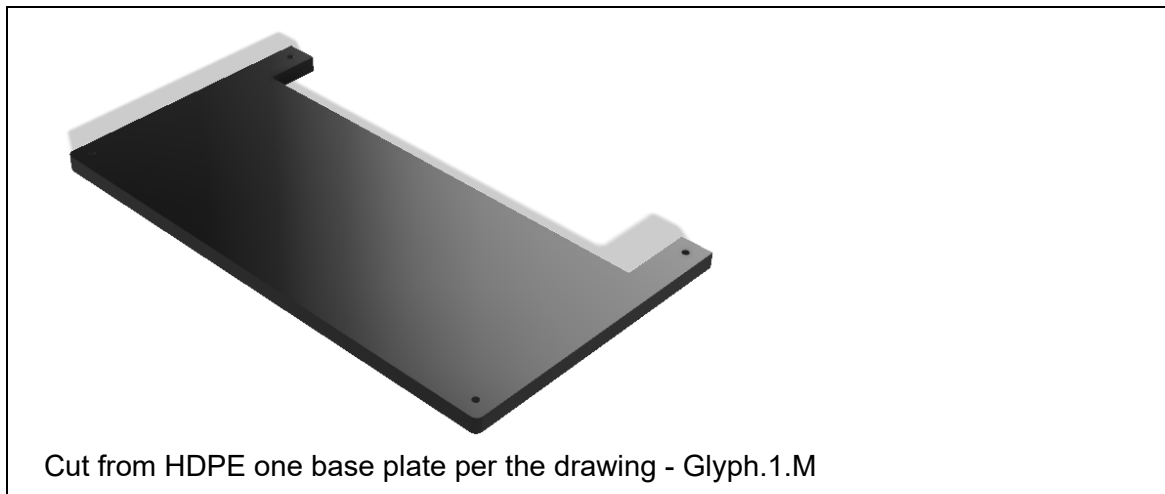


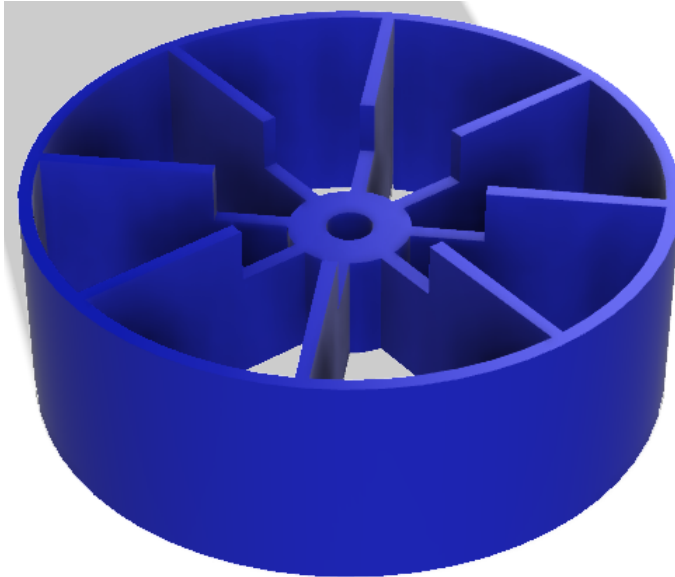
6.0 How to Build the Glyph Collector Module

Step 1 Buy the parts listed below:

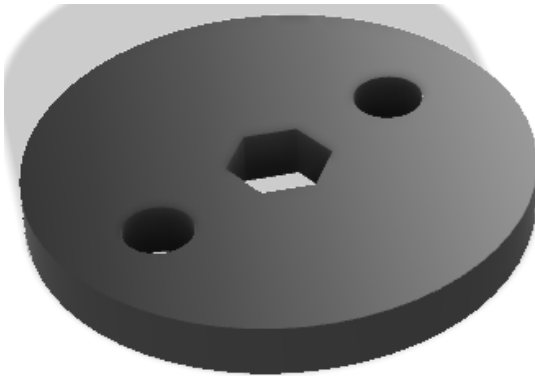
<u>Quantity</u>	<u>Item</u>	<u>Price</u>
2	Rev Robotics, Core Hex Motor, Prt #: REV-41-1300 (\$21.00/ea)	\$42.00
1	Sheet of HDPE ¼" (price varies)	\$30.00
1	Rev Robotics, hex shape axle, prt# REV-41-1362, (\$15.00/pack of 4). Cut two pieces 3".	\$15.00
2	Rev Robotics, axle collar, REV-41-1327, (\$7.00/pack of 10)	\$7.00
--	Misc nuts and bolts (4mm and 6-32)	
Total cost		\$73.00

Step 2 Manufacture the parts shown below.

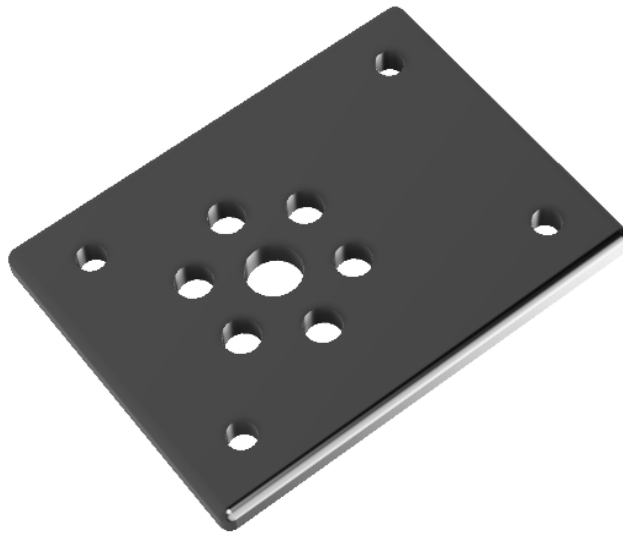




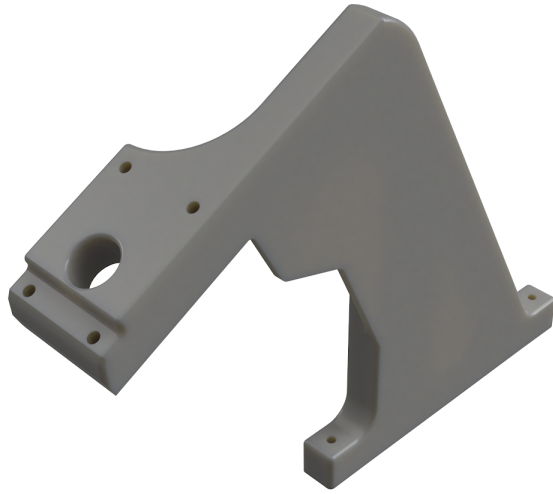
Using Ninjabflex filament or a similar flexible filament, 3D print two wheels per the drawing - Intake.2.M



Using ABS, 3D print four wheel washer adapters per the drawing - Intake.3.M.



Using ABS, 3D print two motor mounts per the drawing - Intake.5.M.

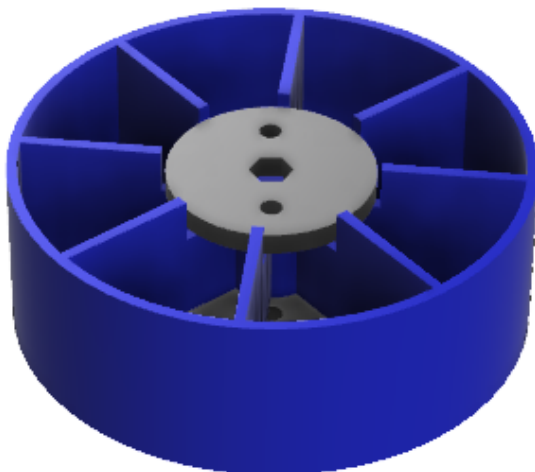


Using ABS, 3D print the right side of the collector stand. - Intake.7.M.

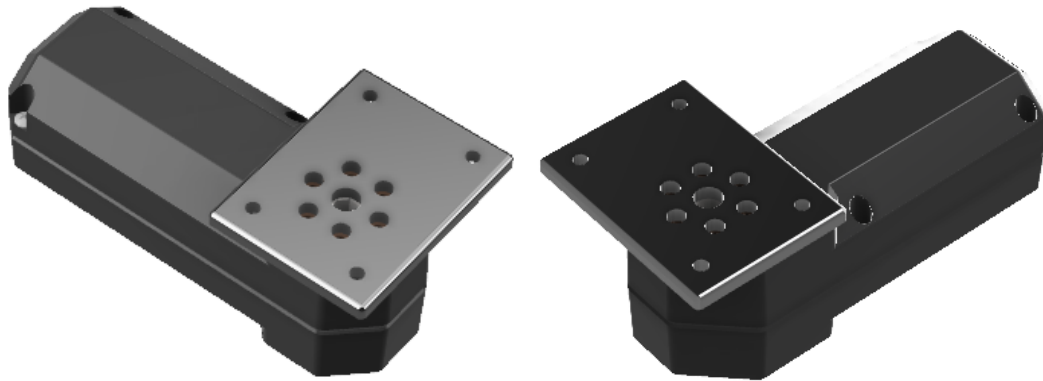


Using ABS, 3D print the left side of the collector stand. - Intake.8.M

Step 3 Assemble the parts as shown below.

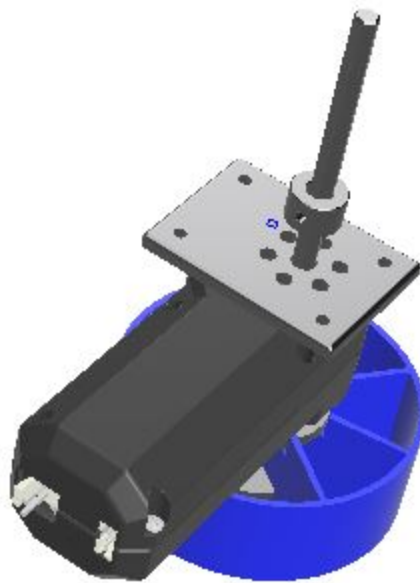


Attach 2 washers to a wheel.

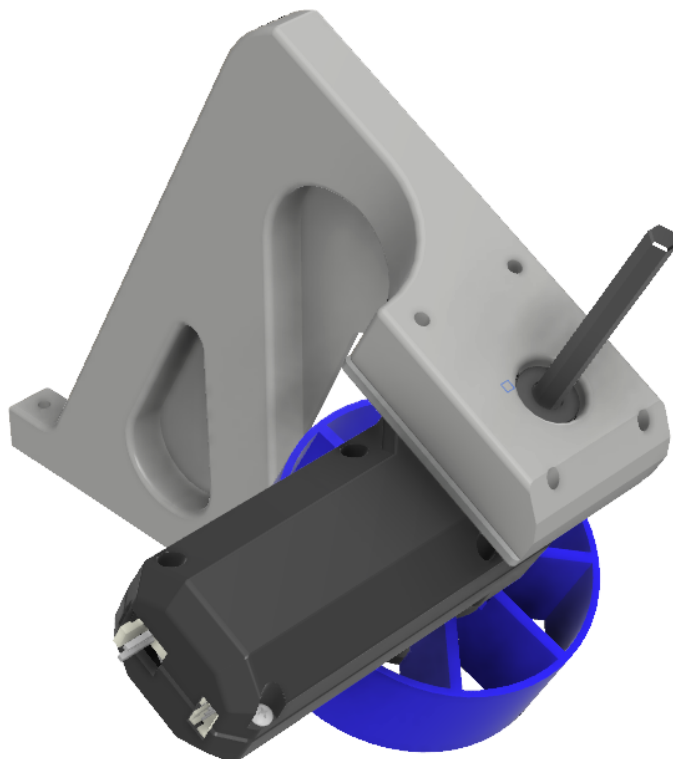


Bolt two motors to the motor mounts using 4mm bolts.

Insert an axle into the wheel and put a collar on the end of the axle.

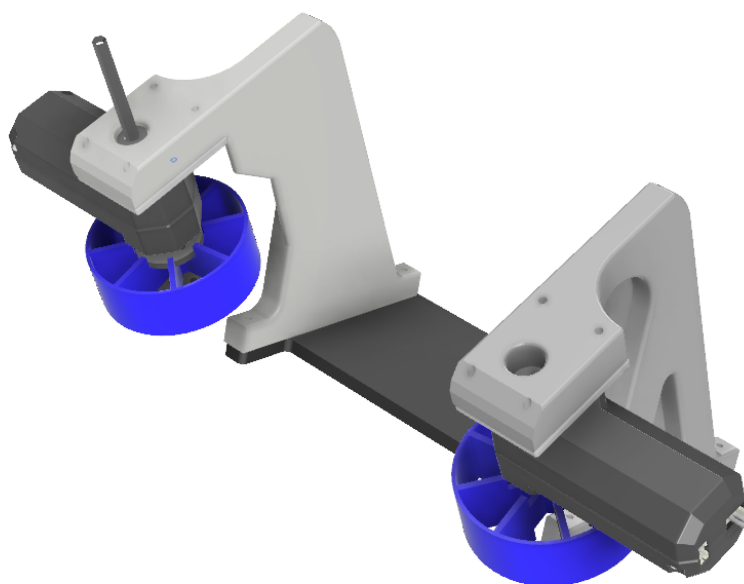


Slide the axle into the axle slot on the motor.

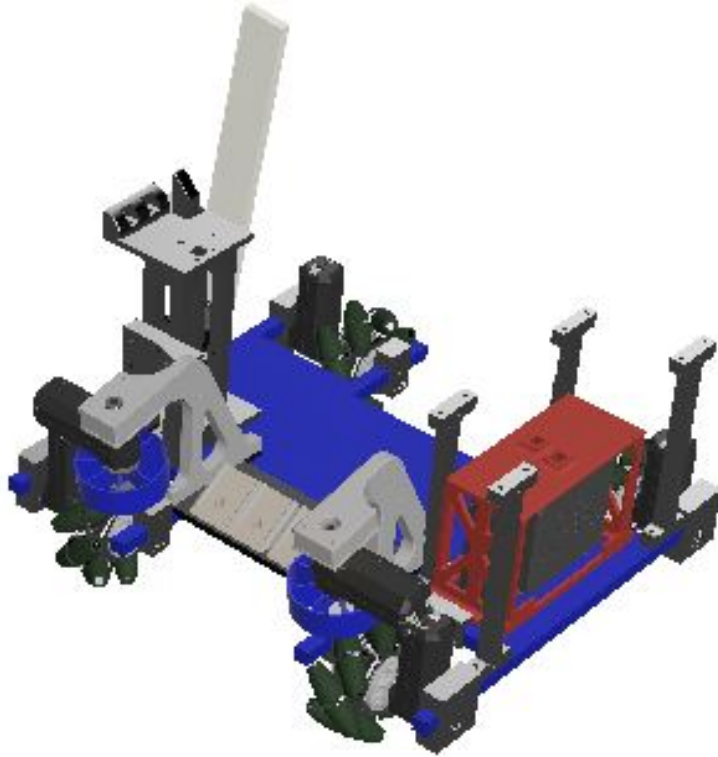


Attach the motor mount to the stand using 1.25" 6-32 bolts.

Repeat the steps above for the other side of the collector.



Using 6-32 bolts, attach the mounts to the baseplate of glyph collector.



Attach the glyph collector to the chassis as shown.