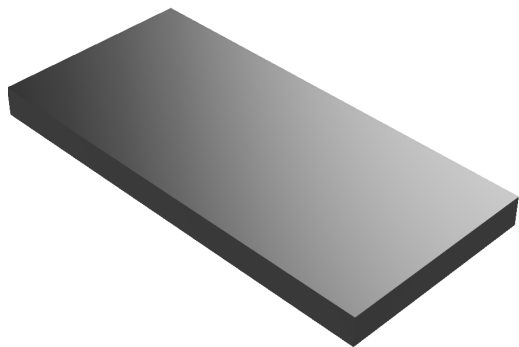


5.0 *How to Build the Jewel Sword Module*****

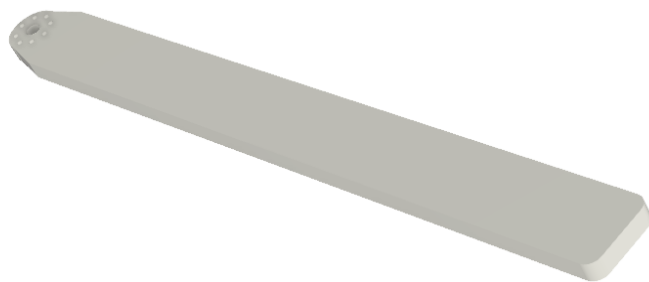
Step 1 Buy the parts listed below:

<u>Quantity</u>	<u>Item</u>	<u>Price</u>
--	¼" HDPE	
--	Misc bolts and nuts	
1	Tetrix MAX Single Standard-Scale Servo motor bracket, Part #: W39060	\$9.95
2	Servocity, 24 tooth C1 spline, servo horn Part #: 525116	\$4.99
2	Servocity, HS-485HB, Hitec servo model #32625S, \$17.40/ea	\$34.80
Total cost		\$49.74

Step 2 Manufacture the parts shown below.

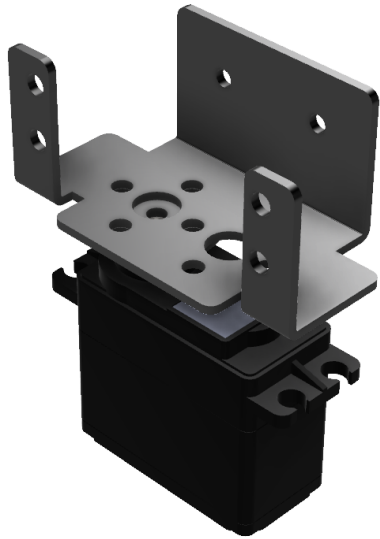


Cut a baseplate 2 ½" by 1 ⅝".

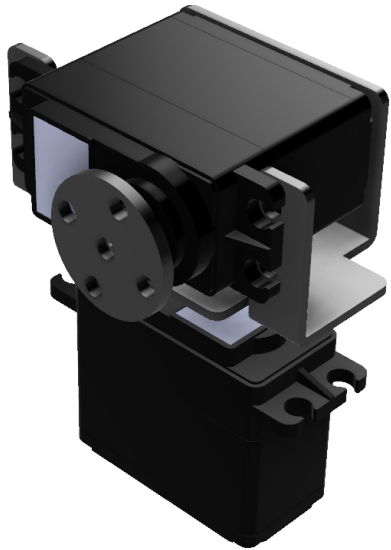


Cut the jewel sword per drawing - Sword.1.M

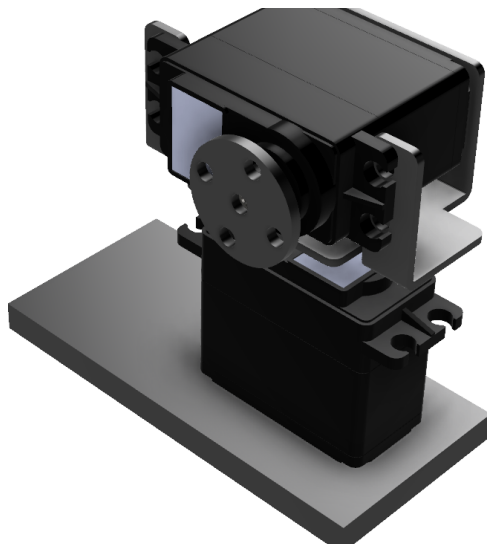
Step 3 Assemble the parts as shown below.



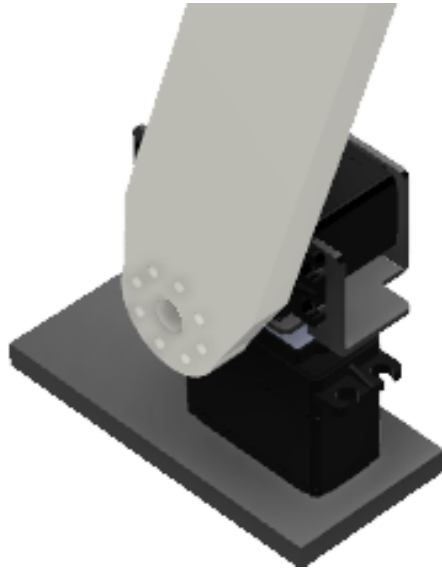
Attach the servo mounting bracket to the servo horn as shown and then attach to the servo.



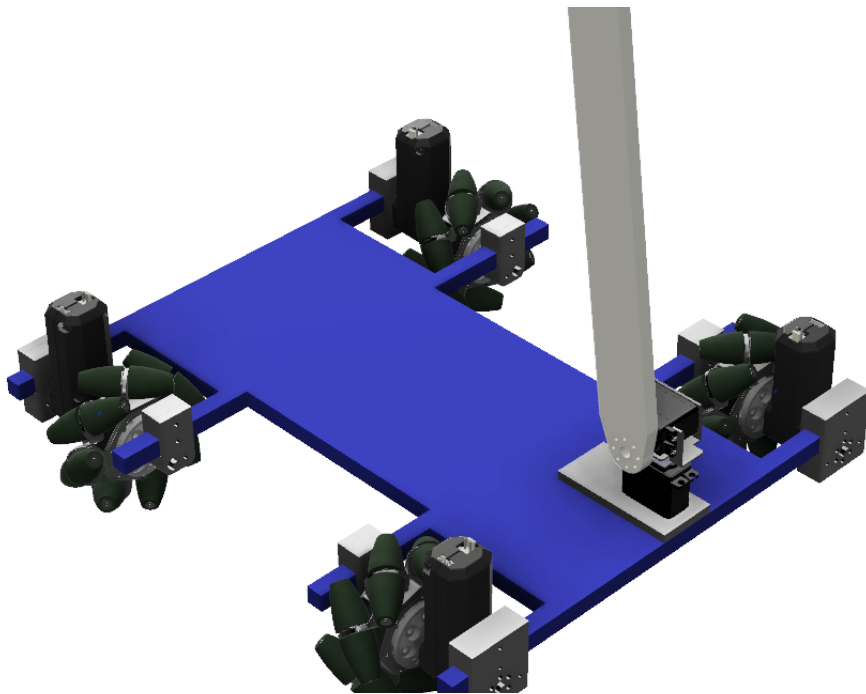
Attach the second servo to the servo mounting bracket.



Attach the servo assembly to the baseplate.



Attach the sword to a servo horn and then attach to the servo per drawing Sword.1.E



Attach the jewel sword module to the chassis as shown.